

# The Care Home Palliative Education Programme

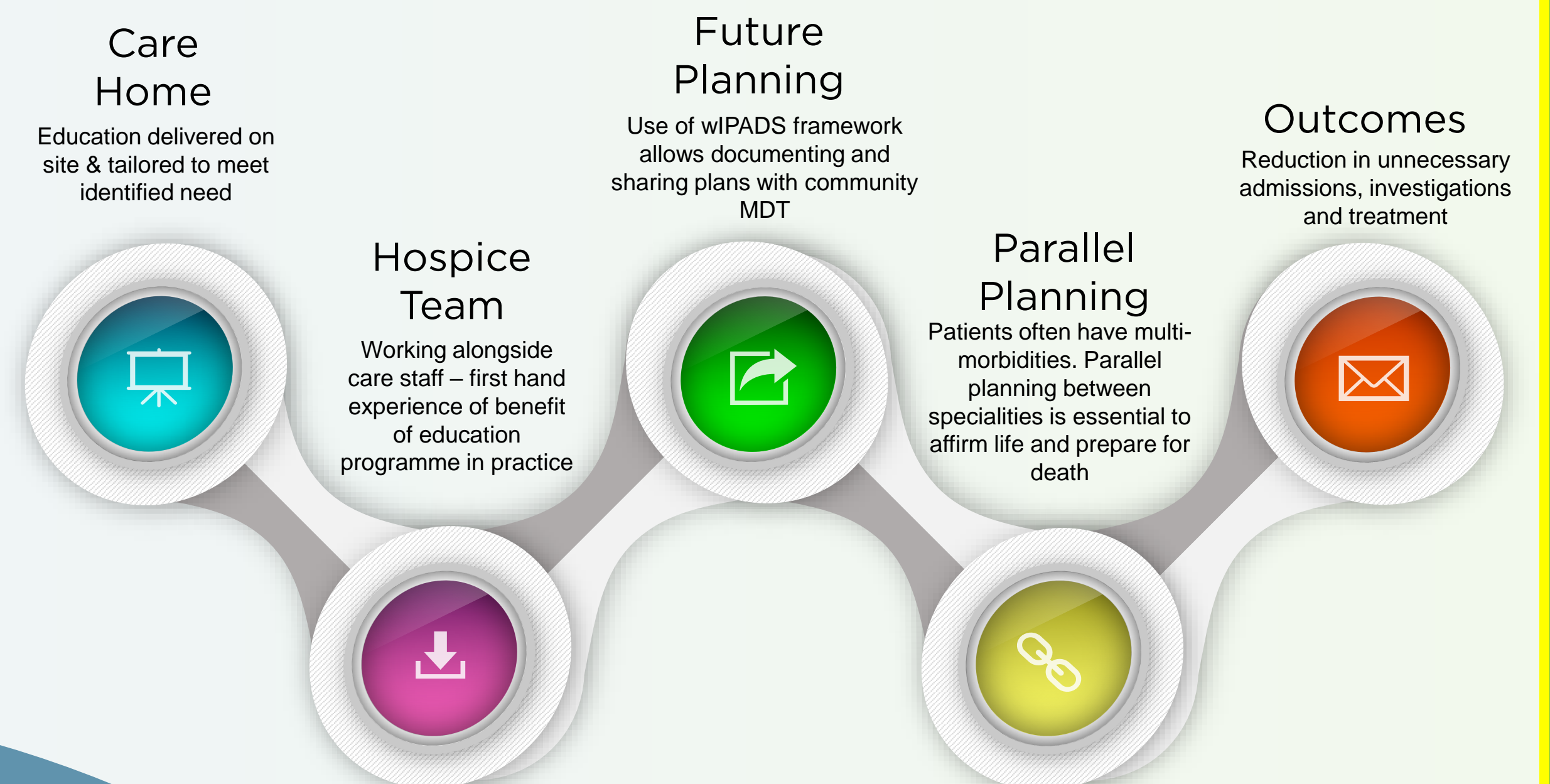
Kim Jones

## Background

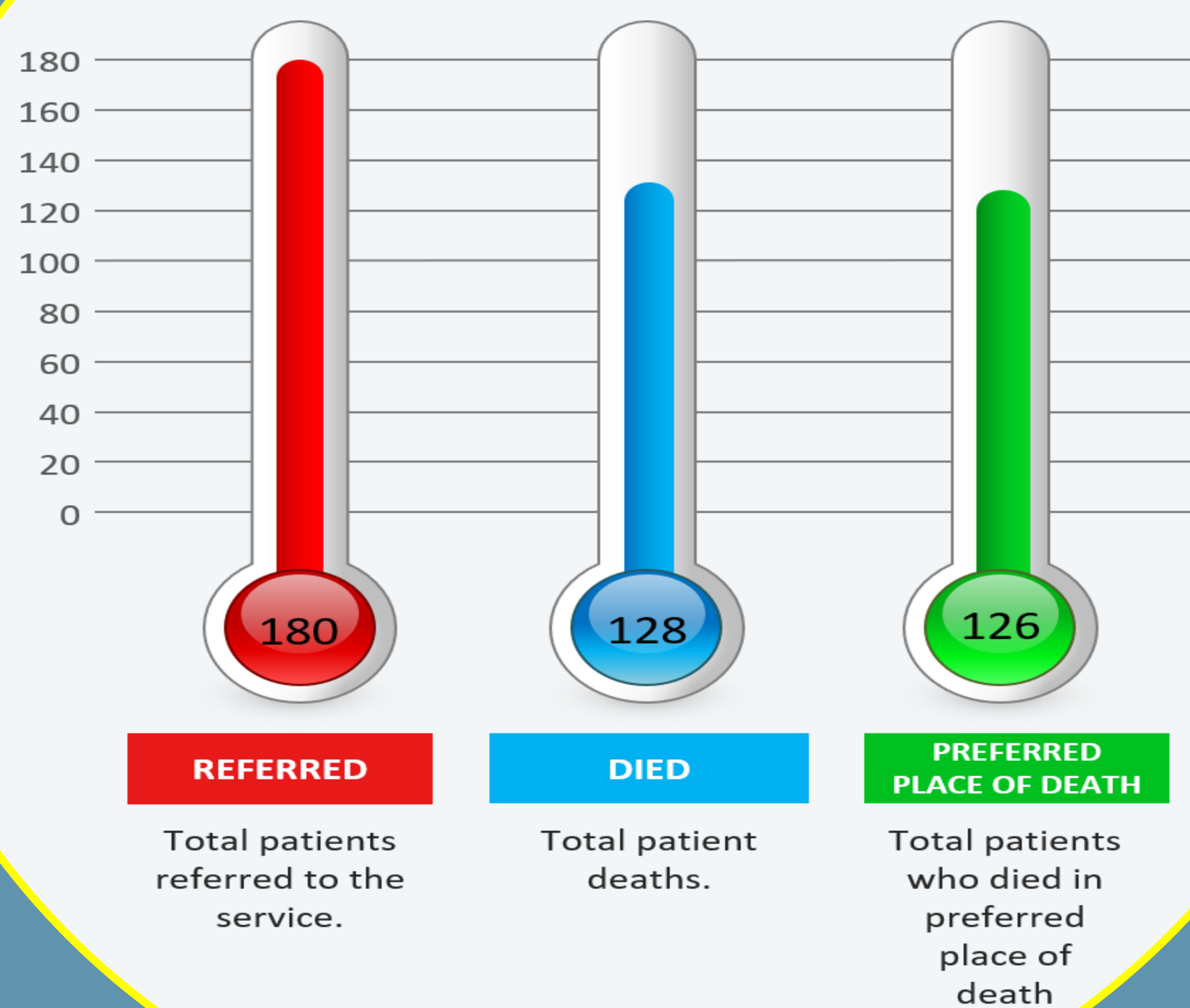
The Care Home Palliative Education Programme is rolled out over 13 care homes. It focuses on end of life care, symptom control, Advance Care Planning and bereavement needs assessment



## Method



## Results (over 18 months)



## Feedback (203 staff taught over 18 months)

70% felt they would be more comfortable having ACP discussions with patient's families

*"Very insightful."*

*"I have learned the difference Between palliative and end of life Care."*

*"Gave me a lot of information and knowledge."*

*"Learned quite a lot about how to communicate..."*



## Courses

- Palliative and End of Life Care
- Communication and Advance Care Planning
- Bereavement
- Parkinson's

## Care Home Manager

- *"An inspiration to myself, staff, residents and families at Cwrt Mytton"*
- *"Training, education and coaching has enabled a change in culture"*
- *"Confidence to empower residents and families to make choices"*
- *"Re-evaluation of priorities...focus on interaction and building relationships"*

## Aim

The overarching aim of the education programme is to increase the knowledge and skills and confidence of care home staff. This enables them to:

- Identify appropriate patients earlier
- Address the need for future planning
- Provide palliative and end of life care
- Support and involve families

## Hospice of the Valleys

Festival Drive  
Ebbw Vale  
Blaenau Gwent NP23 8XF  
Tel. 01495 717277  
Email:  
enquiries@hospiceofthevalleys.com